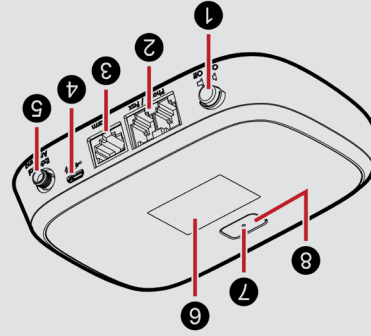


verizon

Meet your Wireless Home Phone.

About your Wireless Home Phone

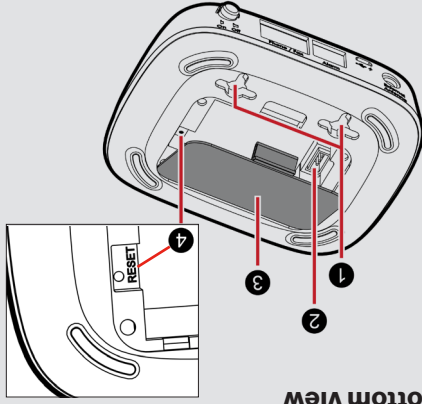
Top view



No.	Item	No.	Item
1	Power on/off button	5	Antenna connector
2	Phone/Fax port 1 (RJ11)	6	OLED display
	Phone/Fax port 2 (RJ11)	7	LED status indicator
3	Home security port	8	Menu button
4	Power connector port		

*Note: Never place a USB-based device into the power connector port of the Wireless Home Phone. Doing so may damage the Wireless Home Phone and negate its warranty.

Bottom view

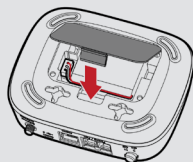
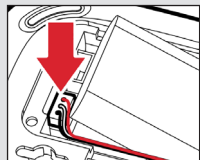
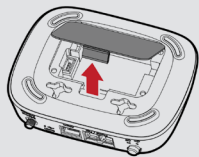


No.	Item	No.	Item
1	Wall-mounting brackets	2	Battery removal tab
2	Battery removal tab	3	Battery cover
3	Battery cover	4	Reset button

Setting up your Wireless Home Phone

Your Wireless Home Phone comes with the SIM card installed.

Step 1: Install the battery

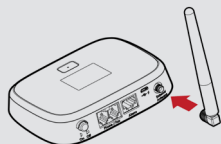


1. Open the battery cover.
2. Insert the battery connection cable into the battery port. Then insert the battery as shown.
3. Close the battery cover.

Optional: Install the antenna

To increase signal strength, you can install an optional antenna.

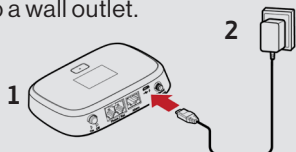
1. Align the antenna with the antenna port and screw securely into place
2. Restart the Wireless Home Phone after the antenna is inserted or removed.



Note: Antenna sold separately.

Step 2: Install the power adapter

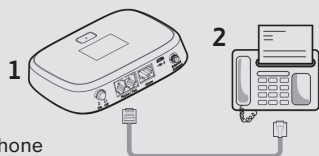
1. Insert the power adapter into the power connector port.
2. Plug the power adapter into a wall outlet.



Step 3: Connect your telephone to the Wireless Home Phone

The Wireless Home Phone provides ports for up to two telephones or Fax machines. The ports use the same telephone number.

1. Unplug all telephones that you want to use with the Wireless Home Phone from wall telephone jacks.
Warning: Only phones plugged into the Wireless Home Phone will use this wireless service. If your existing phone has rotary or pulse dialing, it will not work with this product.
2. Plug the end of your telephone cord into one of the telephone ports on the back of your Wireless Home Phone (the other end of the cord must remain plugged into the back of your home telephone base unit).



Note: The telephone and telephone cord are not included.

Step 4: Turn on your Wireless Home Phone

Press the Power button to turn on the Wireless Home Phone.

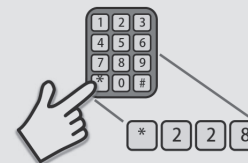
The power indicator will be blue when device is turned on.

Important

Please make sure your Wireless Home Phone is located in an area of your home that receives a strong wireless signal.

Step 5: Initial activation

Dial *228 on the telephone connected to your Wireless Home Phone and follow the instructions.



Please read the following if you are transferring your telephone number from a different provider.

Note: Customers transferring in their home number will not be able to make or receive calls on the Wireless Home Phone until the transfer process is completed. The transfer process can take 2 – 10 business days.

Check the status of your transfer by visiting verizonwireless.com/LNP or by calling **877.567.4899**.

Step 6: Make calls

1. Before making a call, make sure at least one of the signal strength indicator bars (••••) is lit up. If no bars are lit, move the Wireless Home Phone to a location that receives a signal.
2. Place a call to start using the service.

Important

Customers may need to use the three-digit area code when dialing local and long distance numbers.

Find more information

- Please refer to the User Guide at verizonwireless.com/support for more details.
- Customer Service is available at any Verizon Wireless store or by calling **800.922.0204**.